




Map 1

MAP Based on Infiltration Capacity of Geology,  
using appropriate symbols to indicate Hazards



**Legend**

**Infiltration Capacity**

- INFIL**
-  High
  -  Low
  -  Mod

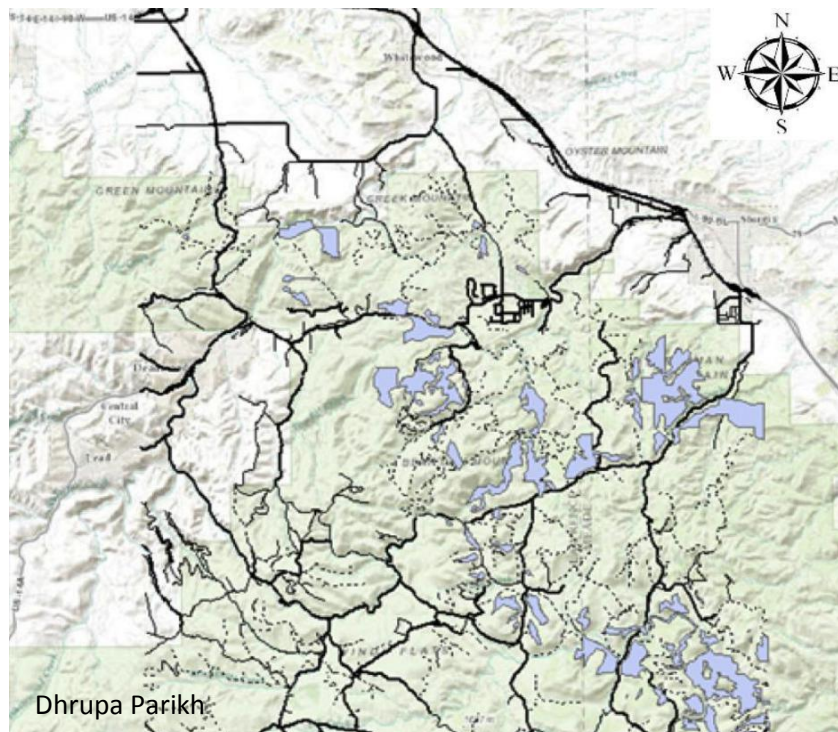


Dhrupa Parikh



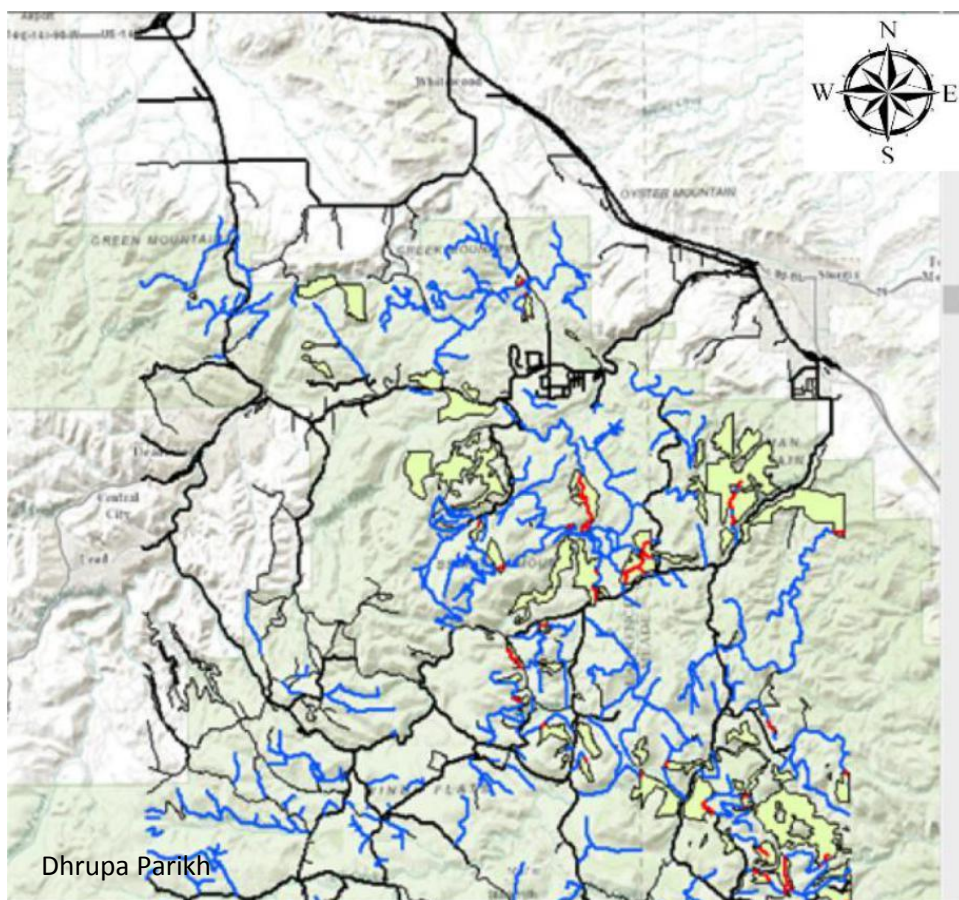
Map 2

Area that are within 300 meters of both streams and primitive roads for famous fishing places



### Map 3

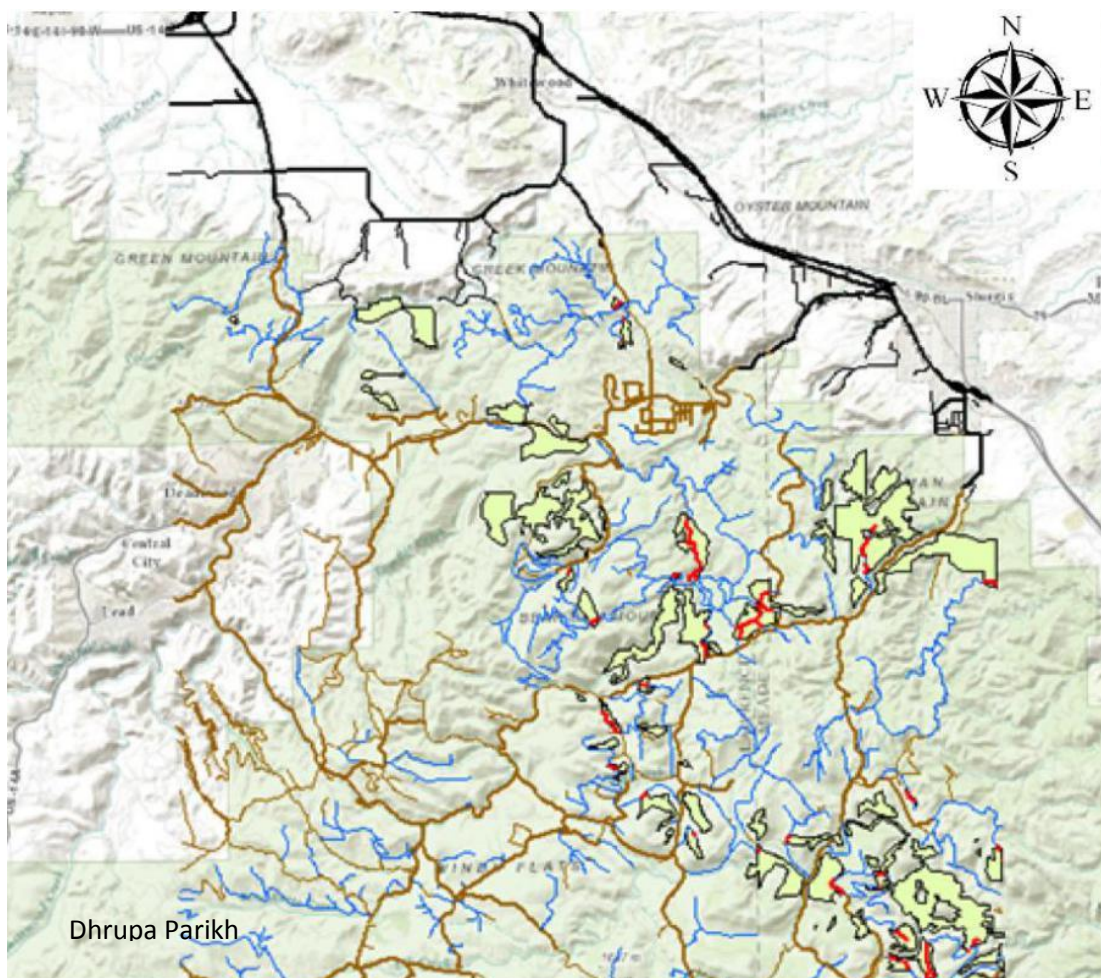
### Private land on Madison Limestone





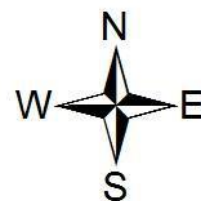
## Map 4

### Cover type map showing the dominant vegetation species






## Map 5

Map #5: Showing the total area lost to harvesting



### Legend

-  clip\_primitive\_sstage96\_4\*\_Total Area to Harvest
-  buffer\_primitiveroads
-  sstage96\_4\*



Dhrupa Parikh

**Question 1: What is the total area of the proposed thinning?**

Ans:-Total area of the proposed thinning is 3.11 (Sum/1million) km square.

**Question 2: What is the total area of snail habitat?**

Ans:-Total area of snail habitat is 20.02 (Sum/1million) km square.

**Question 3: What is the percent reduction in habitat if the thinning is done?**

The percent reduction in habitat if proposed thinning is done is 15.5%. (Proposed Thin / Snail Habitat \* 100 = % Reduction)